

Monitoring and Evaluation

Khoti Gausi
WHO IST East and Southern Africa
Harare, Zimbabwe

1 | IST East and Southern Africa
| 07 July 2010



Key Issue

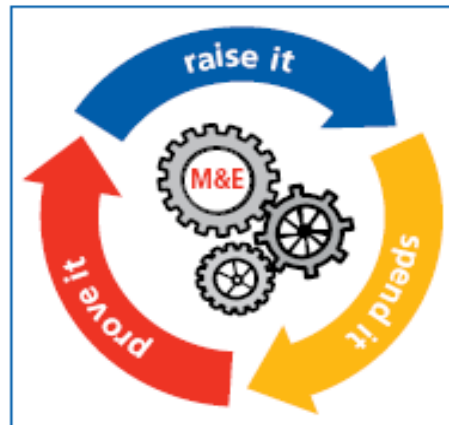
Consolidated disease proposal – voluntary in R10 and mandatory starting Round 11.

2 | IST East and Southern Africa
| 07 July 2010



GF funding is Performance Based Funding (PBF)

PBF is about making performance a precondition for funding



The Steps (GFATM)

Step 0: Raise it (initial funding)

- Funding is based on the quality of the proposal potential to achieve impact.
- 1st disbursement is made based on targets and indicators agreed in Performance Framework. By now you will have submitted an National Malaria M&E Plan (Checklist for M&E Plan development is available for your use)

Step 1: Spend it

- The money received is spent on implementation of programmed activities. A functional M&E system must be in place from the very beginning to monitor activities on a regular basis. Otherwise strengthen it.

The Steps (2)

Step 2: Prove it





- ❑ The outputs of some of the activities undertaken are measured through the agreed indicators and reported as achieved results.
- ❑ The extent to which achieved results meet the agreed targets will help determine the amount needed in the next disbursement.

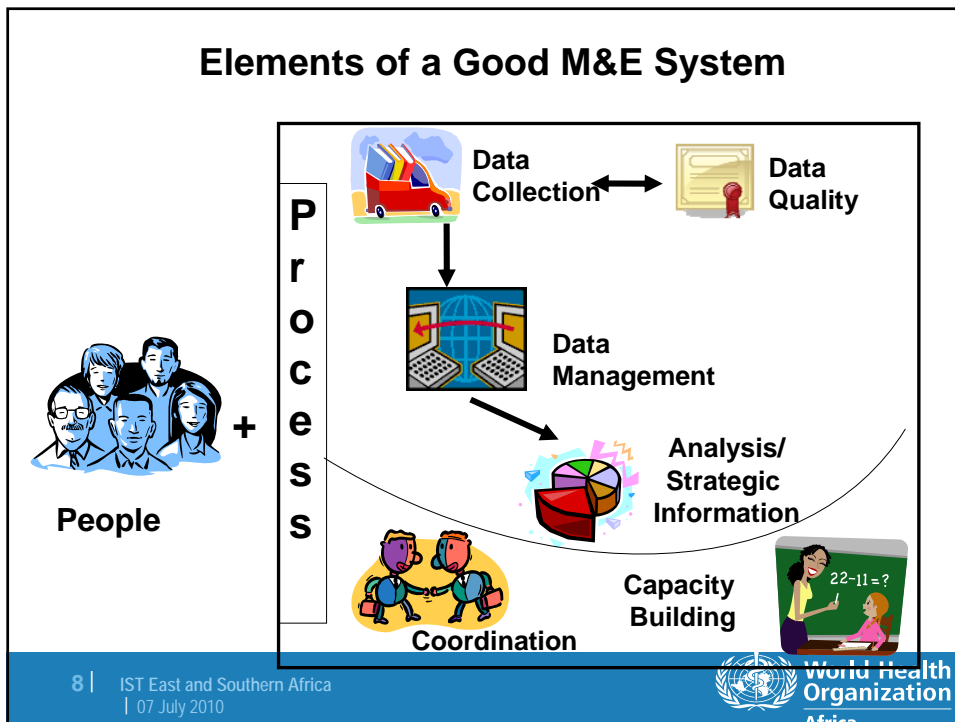
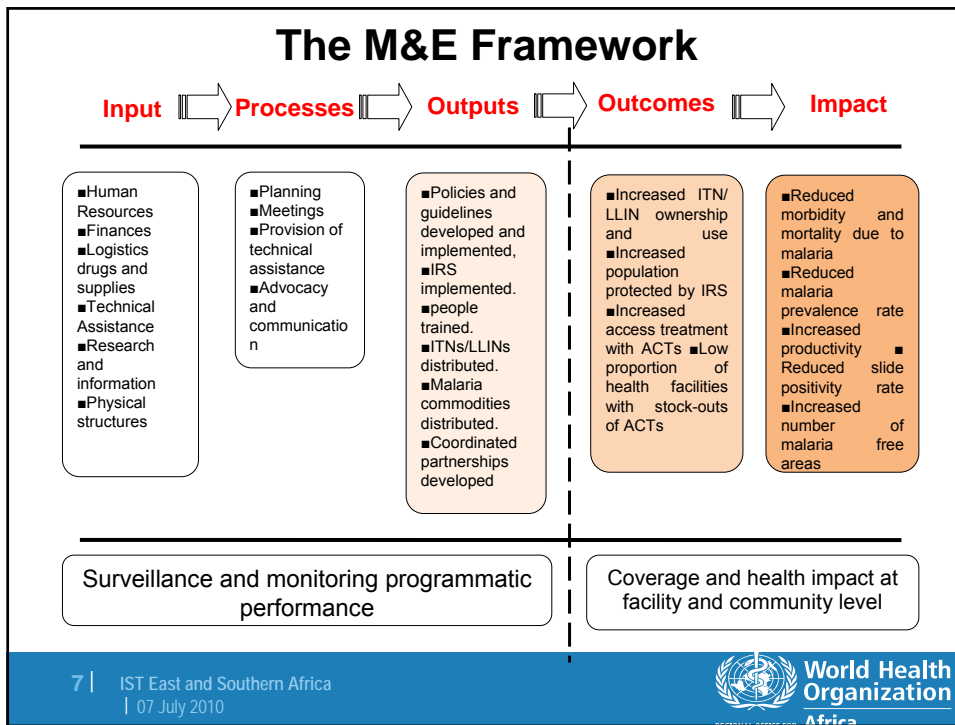
Step 3: Raise it

- ❑ Additional disbursements are made to allow continued implementation.

Another way to look at it...

4 Stages of Performance Based Funding (PBF)

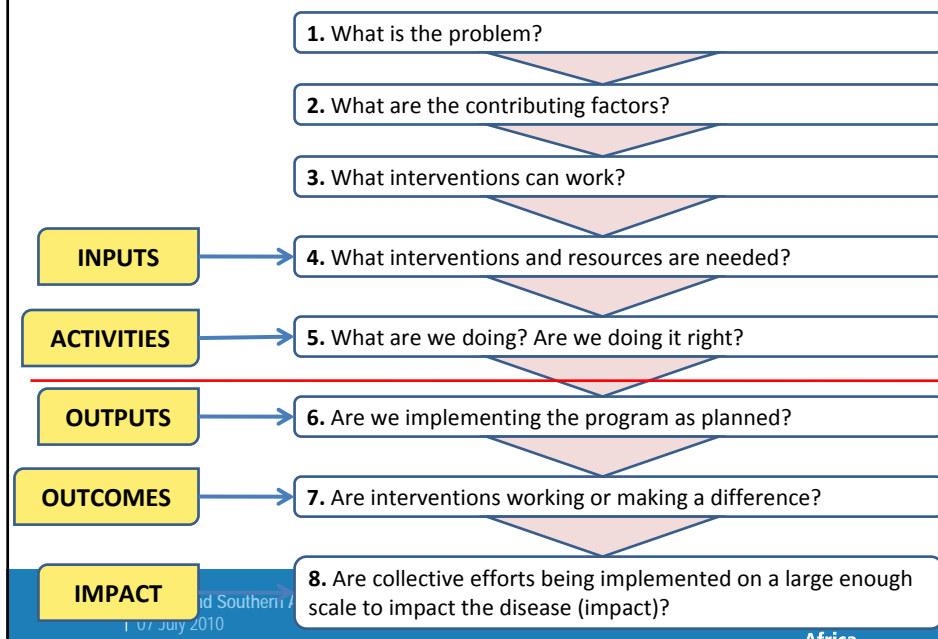
- 1 Sign the Performance Framework**
Agree on the Indicators and Targets to measure performance throughout the lifetime of the Grant.

- 2 Report achievements against Targets**
Report programmatic achievements against agreed-upon targets.

- 3 Evaluate Grant Performance**
Evaluate Grant Performance based on Financial, Programmatic and Management considerations.

- 4 Disburse Funds**
Decide on disbursement amount for the next implementation period.




GF M&E principles

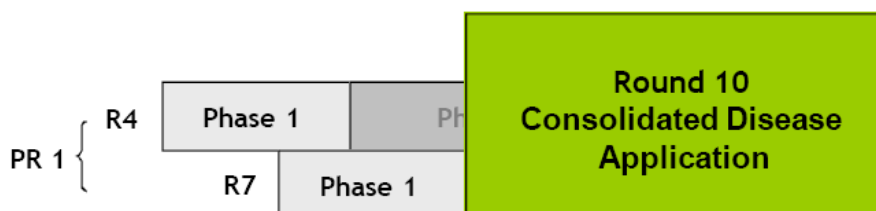
- Country ownership
 - Alignment and Harmonisation ('Three Ones')
 - Managing for results
- } Paris Declaration
- Consistency
 - Simplicity
 - Balance between routine data and surveys
 - Impact measurement

For the GF proposal ...



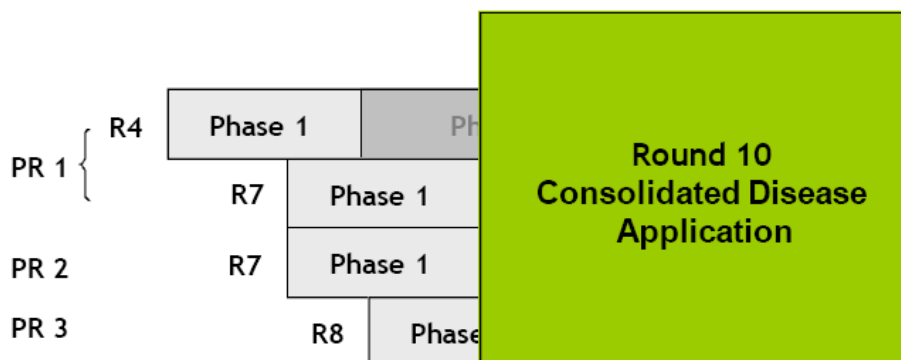
M&E in the R10 Proposal (1)

- Read the Guidelines (if you have not yet done so)
- Key issue: consolidation of disease proposals
 - multiple same-disease grants with one PR



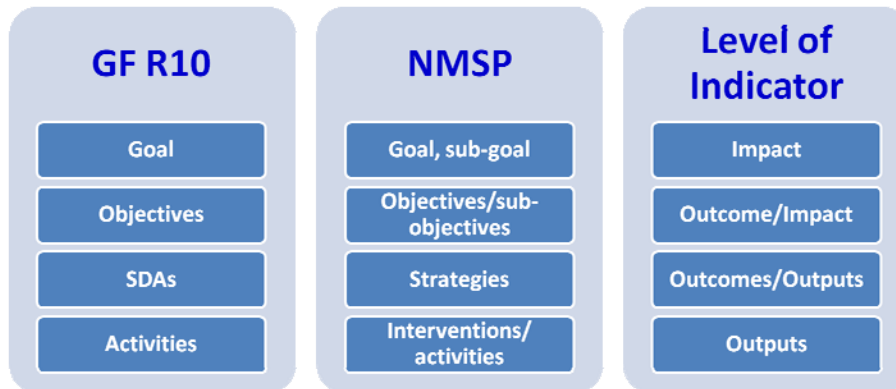
M&E in the R10 Proposal (2)

- Key issue: consolidation of disease proposals
 - multiple same-disease grants with multiple PRs



M&E in the R10 Proposal (3)

- 4.1 National Program
- 4.2 Malaria epidemiology and target populations
- 4.4.1: Interventions
 - Description in an orderly manner and Performance Framework



M&E in the R10 Proposal (4)

- 4.6: M&E Systems
 - Impact and outcome measurement systems
 - Planning for impact and outcome measurement
 - Links with the national M&E system
 - Strengthening monitoring and evaluation systems
- 4.7.4 Coordination between or among implementers
- 5.5.3 Measuring performance
- Annexes 1, 2, 3

Performance Framework (Attachment A)

Goals										
1	Reduce the prevalence of malaria parasite by 50% (or from X to Y) by 2014									
2										
3										
Impact and Outcome Indicators		Value	Baseline	Year	Source	Targets				
						Y1	Y2	Y3	Y4	Y5
Impact	Number of confirmed malaria admissions									
.....									
Outcome	Proportion of hhd residents who slept under an ITN last night									
.....									
Programme Objectives, SDAs and Indicators										
Objective #	Objective Description									
1	To ensure that the population is covered in malaria prevention interventions by 2014.									
2	To ensure that the whole population uses malaria control interventions by 2014.									
3	To correctly manage at least 80% of malaria cases by 2014.									
4	To correctly manage at least 80% of malaria cases that attend a health facility by 2014.									
5	To correctly manage all malaria cases that attend a health facility by 2014.									
...	...									

Which one do you mean?

3. To correctly manage at least 80% of malaria cases by 2014

4. To correctly manage at least 80% of malaria cases that attend a health facility by 2014

5. To correctly manage all malaria cases that attend a health facility by 2014

Which one do you mean?

3. To correctly manage at least 80% of malaria cases by 2014

80% of all malaria cases in the country including those that do not show up at health facilities

4. To correctly manage at least 80% of malaria cases that attend a health facility by 2014

At least 80% of all malaria that show up at health facilities

5. To correctly manage all malaria cases that attend a health facility by 2014

All malaria cases that show up at health facilities

Indicators and Measurement

3. To correctly manage at least 80% of malaria cases by 2014

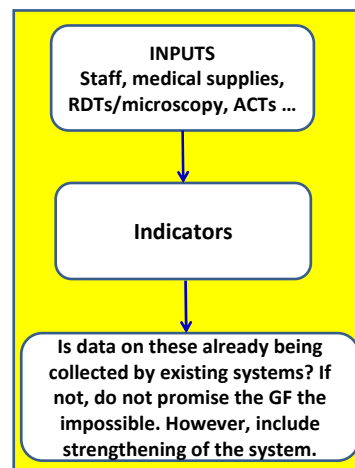
80% of all malaria cases in the country including those that do not show up at health facilities

4. To correctly manage at least 80% of malaria cases that attend a health facility by 2014

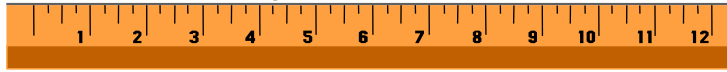
At least 80% of all malaria that show up at health facilities

5. To correctly manage all malaria cases that attend a health facility by 2014

All malaria cases that show up at health facilities



Check your indicators ...



- Is your indicator **valid**? Does it measure what the NMCP is trying to measure?
- Is the indicator **reliable**? Will it produce the same answer if it is used again? Like a thermometer.
- Is the indicator **practical**? Can the measure actually be made? Be real!!

M&E requirements, after proposal is accepted for funding

A) For grant signature:

- 1 National (whenever applicable) M&E Plan
- 2 Performance Framework 1+2 (Phase 1)
- 3 M&E assessment (MESST or similar)
- 4 LFA (repeat) PR assessment

B) Beyond grant signature:

- 5 LFA OSDV (On-Site Data Verification)
- 6 DQA (Data Quality Audit)