

MAWG London 2008

Meeting notes

Criteria for MAWG priorities 2008

- Potential for impact
 - Demonstrate access – evidence that money is making an impact
 - Mortality / Morbidity
- Feasibility – capacity, resources and willingness within MAWG to carry forward
- Immediacy – timeline and target is clear
- Important across 3 continents involved: Africa, US, Europe
- Cost effectiveness

Resource Mobilization

Current Resources: \$1.5B

- Sustaining it (GF, G8, PMI, WB, UNITAID?)
- Performance & effectiveness
- Successes
- Access (CSOs, reaching poorest, etc.)

Increased Resources for Scale-up: \$1.5B+

- Needs for SUFI
- New donors (Japan, TICAD, G8, *Endemic- AU/Pan-African to 15%)*
- Awareness raising
- Reinforce malaria & development messaging
- R & D – ensure robust pipeline (UK, EU, US). Endemic – defining needs and gaps for advocacy to address

Policy

Access

M&E

PSM WG
Interface

TA for advocacy

Sub-region
policy alignment/
coordination
esp. ACT

Taxes & Tariffs
– streamline
(regional)

Capacity
Building

CSOs

IRS

BCC

Next gen
researchers

*Large country
and complex
emergency
strategies, early*

Communication

Evidence base – M&E

Need for clear ask backed up by solid data.

Resources Mapping current and required (for now 3.2 or 4.1 with R&D)

Accountability and transparency AND flexibility
(US Congress)

Demonstrating return on investment

Business case for malaria in poverty; in development; in lives saved, suffering reduced per dollar inputted

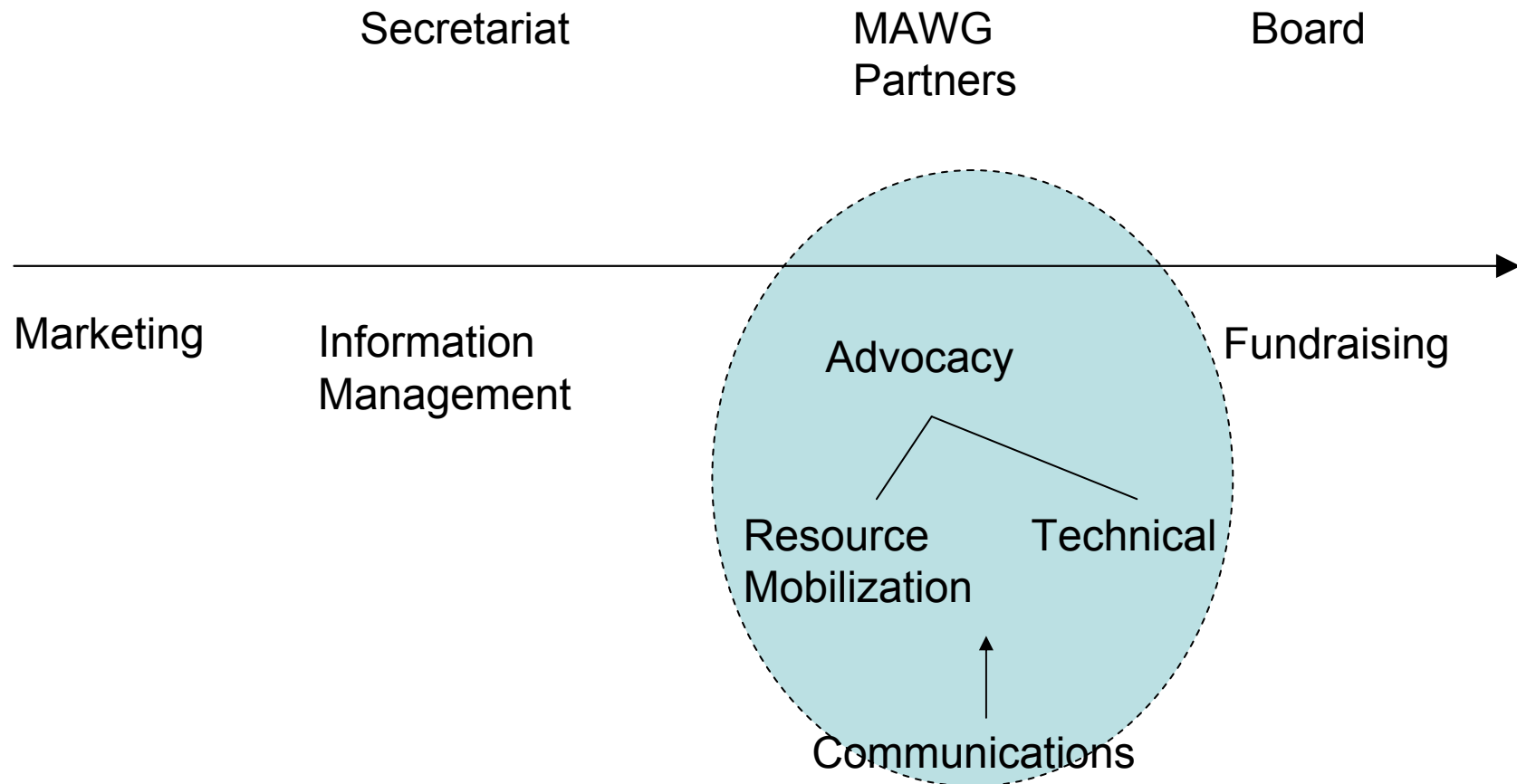
R&D messaging

Communicating globally the needs, gaps and focus as defined by R&D community

Task Teams

- 1.5B / Performance
 - GFATM
 - AU – access to leaders; accountability (map); push for peer pressure
 - Events: WMD (need #s); RBM at 10 years; testimonials
 - Products: Guiding principles for African leaders political comm.;
- 1.5B + / New Donors
 - Events: TICAD, G8, MDG, Kuwait/American Fnd, EU – Accra and Doha, AU Interagency
 - SUCCESS =Mapping done; tools developed resulting in expanded public sector support (include Resource needs doc);
 - Strategizing
 - **Mapping matched with tools**; Where X donor fits in; linkages; environment creation; media; identify who has access; key events to reach X donor; *private sector*
- R&D
 - Identify gaps; Statement/doc on next gen res; Key msgs on vaccine pipeline and roll-out; next gen tools
- LINKAGES: HIV/AIDS, Child Survival, Reproductive Health, MDG, Climate Change
- Complex Emergencies

Expectations & Expertise



Events

- April, Sweden. Donor Harmonization – EU, Wellcome Trust
- 28-30 May, Japan. TICAD
- 10-11 June-EU. Successes and map for poverty related communicable diseases
- 10-12 March, Addis. MIM

Research

- George Institute report. Excess of products? Resource needs to move current pipeline forward
- Wellcome Trust grants and initiatives on next gen researchers

Parking lot

- Policy statement from WHO needed on comm-based ACT trt & RDT use
- Regional: Advocacy for TA, M&E, PSM
- Complex Emergency
- Large Country (HWG)
- Secretariat function to link MAWG to opportunities (systematic)
- How to work with and leverage HIV/AIDS advocacy community
- *Communication – in each task team.*
 - Fundraising tools, products (with audience target)
 - Resource needs document (develop and disseminate)
- *Information needs – secretariat to coordinate*
- *Policy Effectiveness – secretariat gather from WG, Networks, SRNs, BCG*

World Malaria Day

- World Malaria Day in/for Africa, 25 April
- Need for joint resources
 - BRoll from across malarious world
 - Eradication talking points
 - RBM Website
- Theme: process
 - ACCESS for Impact. Malaria is a good investment. Linkages. Millions of faces against malaria. Malaria, the missing link
 - Events: European Alliance briefing in Bonn (task force created – paris, madrid); Zambezi Expedition / Livingstone; NYC, UNF and Nothing but Nets; DC WB with Youssou; White House?; Ted Turner at UN GA; Congressional Hearing