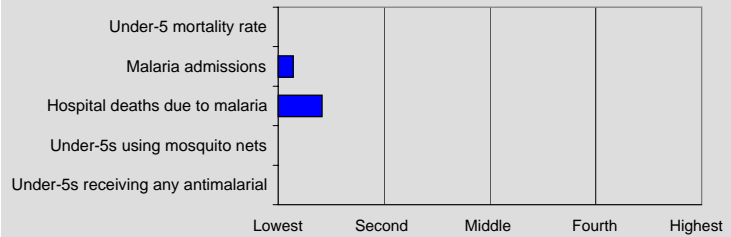


Namibia

General indicators	Source	2001
Population (thousands)	UNPOP	1788
Population growth rate (%)	UNPOP	2.3
Infant mortality rate (per 1000)	UNICEF	55
Under-5 mortality rate (per 1000)	UNICEF	67
Crude birth rate (per 1000)	UNPOP	34.5
Pop. at risk (%)	MARA ¹	41

Proportional rank for select indicators



Malaria morbidity and mortality

Hospital deaths due to malaria	0%
Malaria admissions	~10%
Malaria outpatient attendance	~20%
Outpatient malaria cases (per 1000)	
Inpatient malaria cases (per 1000)	

0% 20% 40% 60% 80% 100%

Source	1998	1999	2000	2001
MoH	2	6		
MoH		6		
MoH		17		
MoH	173	27	15	

Mosquito nets and ITNs

Households with mosquito nets	0%
Under-5s using mosquito nets	0%
Households with ITNs	0%
Under-5s using ITNs	0%

0% 20% 40% 60% 80% 100%

Source	1998	1999	2000	2001
--------	------	------	------	------

Antimalarial treatment

Under-5s receiving any antimalarial	0%
Under-5s receiving chloroquine	0%
Under-5s receiving any antimalarial <24 h	0%

0% 20% 40% 60% 80% 100%

Source	1998	1999	2000	2001
--------	------	------	------	------

Attending health facility

Under-5s receiving any antimalarial	0%
Under-5s receiving chloroquine	0%

0% 20% 40% 60% 80% 100%

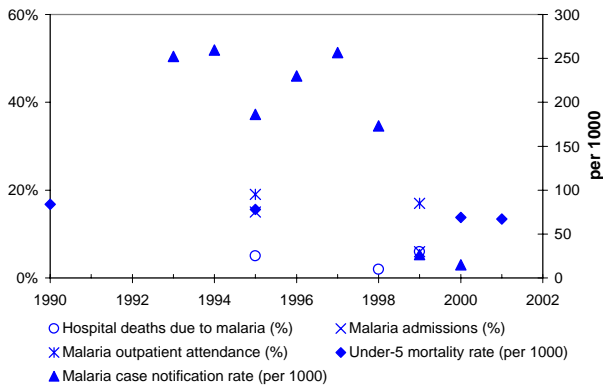
Source	1998	1999	2000	2001
--------	------	------	------	------

Malaria in pregnancy

PW receiving ANC at least once	0%
PW attending ANC at least twice	0%
PW receiving IPT at least once	0%
PW receiving IPT at least twice	0%
PW using mosquito nets	0%
PW using ITNs	0%

0% 20% 40% 60% 80% 100%

Source	1998	1999	2000	2001
--------	------	------	------	------



Antimalarial treatment policy

Date adopted:	----	
Uncomplicated	Probable	CQ 25 mg/kg
	Confirmed	CQ 25 mg/kg
Treatment failure		SP
Severe malaria		Quinine 3 times a day, 7 days
Pregnancy	Prevention	CQ weekly

Taxes and tariffs on insecticide-treated nets

	Date
Import tariff - nets	
VAT - nets	

Notes

For an explanation of indicators, ranks, and other information, see the Country Profile Overview.

Sources listed reflect most recent value.

Case notification rate is based on number of reported outpatient cases.

Nationally representative surveys (MICS and DHS) are used for reporting intervention coverage estimates for 1) mosquito net and ITN possession and use and 2) antimalarial treatment.

¹ Population at risk is determined from modelling retrospective climate data and population projections. Percentage of population at risk does not vary by year.