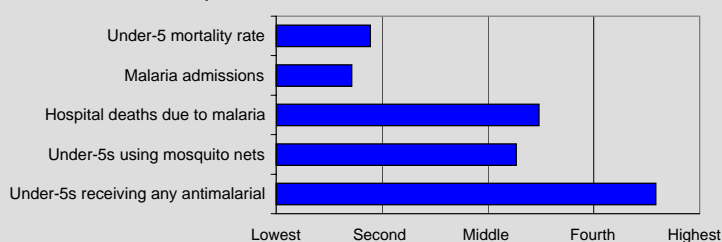


Kenya

General indicators	Source	2001
Population (thousands)	UNPOP	31293
Population growth rate (%)	UNPOP	2.5
Infant mortality rate (per 1000)	UNICEF	78
Under-5 mortality rate (per 1000)	UNICEF	122
Crude birth rate (per 1000)	UNPOP	34.1
Pop. at endemic (epidemic) risk (%)	MARA ¹	53 (24)

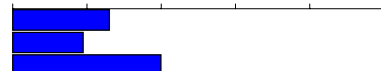
Proportional rank for select indicators



Malaria morbidity and mortality

Hospital deaths due to malaria	26
Malaria admissions	19
Malaria outpatient attendance	40
Outpatient malaria cases (per 1000)	10
Inpatient malaria cases (per 1000)	5

0% 20% 40% 60% 80% 100%

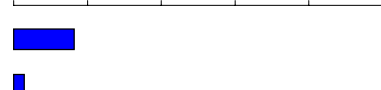


Source	1998	1999	2000	2001
MoH		26		
MoH		19		
MoH		40		
MoH		10	5	
MoH			1	

Mosquito nets and ITNs

Households with mosquito nets	
Under-5s using mosquito nets	16
Households with ITNs	
Under-5s using ITNs	3

0% 20% 40% 60% 80% 100%

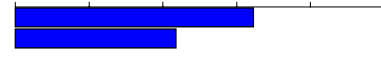


Source	1998	1999	2000	2001
MICS			16	
MICS			3	

Antimalarial treatment

Under-5s receiving any antimalarial	65
Under-5s receiving chloroquine	44
Under-5s receiving any antimalarial <24 h	

0% 20% 40% 60% 80% 100%



Source	1998	1999	2000	2001
MICS			65	
MICS			44	

Attending health facility

Under-5s receiving any antimalarial	42
Under-5s receiving chloroquine	25

0% 20% 40% 60% 80% 100%



Source	1998	1999	2000	2001
MICS			42	
MICS			25	

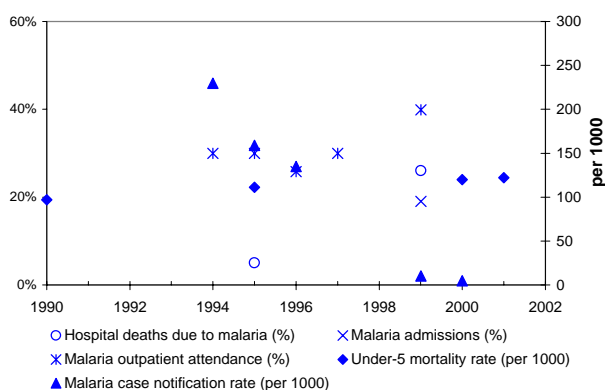
Malaria in pregnancy

PW receiving ANC at least once	
PW attending ANC at least twice	
PW receiving IPT at least once	
PW receiving IPT at least twice	
PW using mosquito nets	
PW using ITNs	76

0% 20% 40% 60% 80% 100%



Source	1998	1999	2000	2001
MICS			76	



Antimalarial treatment policy

	Date adopted:	1998
Uncomplicated	Probable	SP
	Confirmed	SP
Treatment failure		AQ
Severe malaria		Quinine 3 times a day, 7 days
Pregnancy	Prevention	SP - IPT

Taxes and tariffs on insecticide-treated nets

	Date
Import tariff - nets	18%
VAT - nets	2001

Notes

For an explanation of indicators, ranks, and other information, see the Country Profile Overview. Sources listed reflect most recent value.

Case notification rate is based on number of reported outpatient cases.

Nationally representative surveys (MICS and DHS) are used for reporting intervention coverage estimates for 1) mosquito net and ITN possession and use and 2) antimalarial treatment.

¹ Population at risk is determined from modelling retrospective climate data and population projections. Percentage of population at risk does not vary by year.