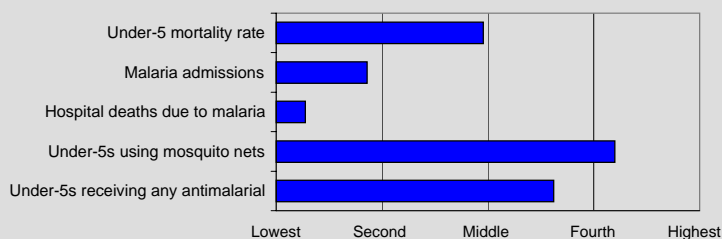


## Benin

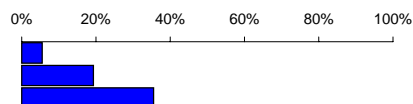
General indicators	Source	2001
Population (thousands)	UNPOP	6446
Population growth rate (%)	UNPOP	3.0
Infant mortality rate (per 1000)	UNICEF	94
Under-5 mortality rate (per 1000)	UNICEF	158
Crude birth rate (per 1000)	UNPOP	42.0
Pop. at endemic (epidemic) risk (%)	MARA <sup>1</sup>	100 (0)

### Proportional rank for select indicators



### Malaria morbidity and mortality

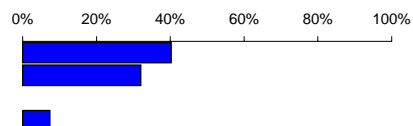
Hospital deaths due to malaria	MoH	15	6
Malaria admissions	MoH	26	19
Malaria outpatient attendance	MoH	35	36
Outpatient malaria cases (per 1000)	MoH	115	85
Inpatient malaria cases (per 1000)	MoH		2



Source	1998	1999	2000	2001
MoH	15			6
MoH	26			19
MoH	35	36	36	
MoH	115			85
MoH				2

### Mosquito nets and ITNs

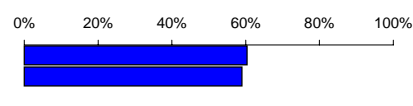
Households with mosquito nets	DHS	40
Under-5s using mosquito nets	DHS	32
Households with ITNs		
Under-5s using ITNs	DHS	7



Source	1998	1999	2000	2001
DHS				40
DHS				32
DHS				7

### Antimalarial treatment

Under-5s receiving any antimalarial	DHS	60
Under-5s receiving chloroquine	DHS	59
Under-5s receiving any antimalarial <24 h		



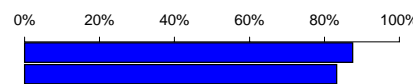
Source	1998	1999	2000	2001
DHS				60
DHS				59

### Attending health facility

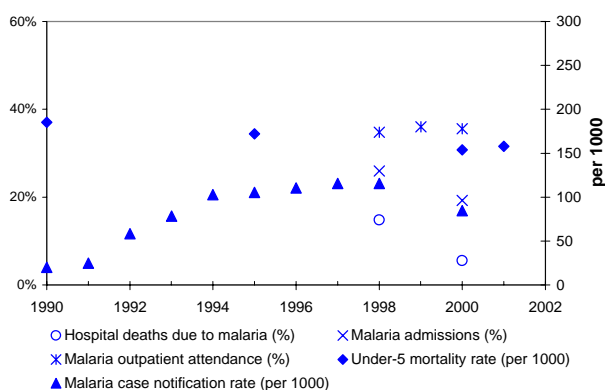
Under-5s receiving any antimalarial		
Under-5s receiving chloroquine		

### Malaria in pregnancy

PW receiving ANC at least once	DHS	88
PW attending ANC at least twice	DHS	83
PW receiving IPT at least once		
PW receiving IPT at least twice		
PW using mosquito nets		
PW using ITNs		



Source	1998	1999	2000	2001
DHS				88
DHS				83



### Antimalarial treatment policy

Date adopted:	----	
Uncomplicated	Probable	CQ 25 mg/kg
	Confirmed	CQ 25 mg/kg
Treatment failure		SP
Severe malaria		Quinine 3 times a day, 7 days
Pregnancy	Prevention	CQ weekly

### Taxes and tariffs on insecticide-treated nets

		Date
Import tariff - nets	18%	2000
VAT - nets	18%	2000

### Notes

For an explanation of indicators, ranks, and other information, see the Country Profile Overview.

Sources listed reflect most recent value.

Case notification rate is based on number of reported outpatient cases.

Nationally representative surveys (MICS and DHS) are used for reporting intervention coverage estimates for 1) mosquito net and ITN possession and use and 2) antimalarial treatment.

<sup>1</sup> Population at risk is determined from modelling retrospective climate data and population projections. Percentage of population at risk does not vary by year.